

**Tree protection plan**  
Location of trees, categorisation & protection/management proposals at Bracken Wood, Jermyns Lane, Ampfield, Romsey

Barrell Plan Ref: 151164976  
Provided Plan Ref: 1361 S1 Rev C & P18.301 01-02-2017

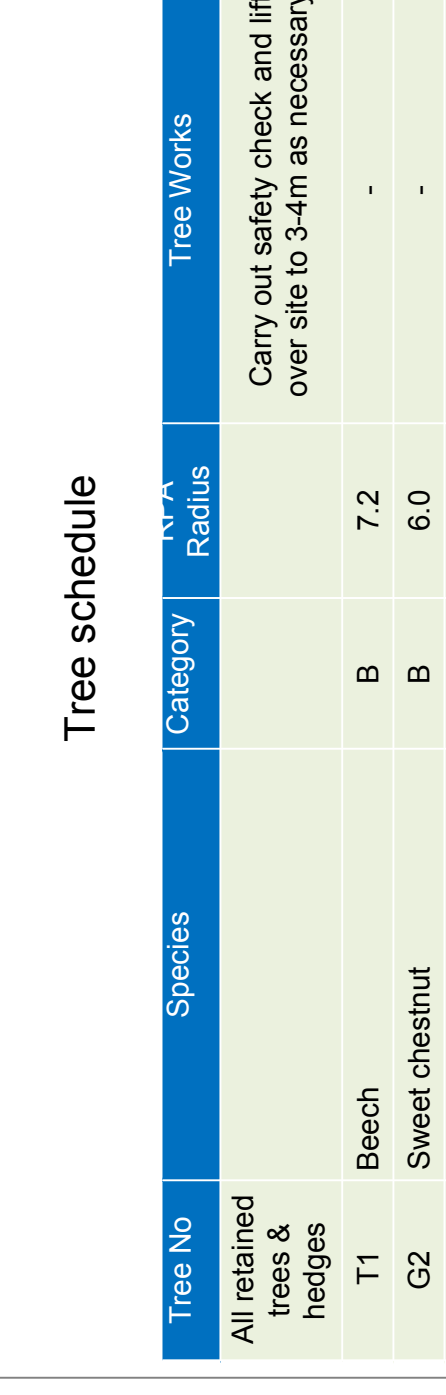
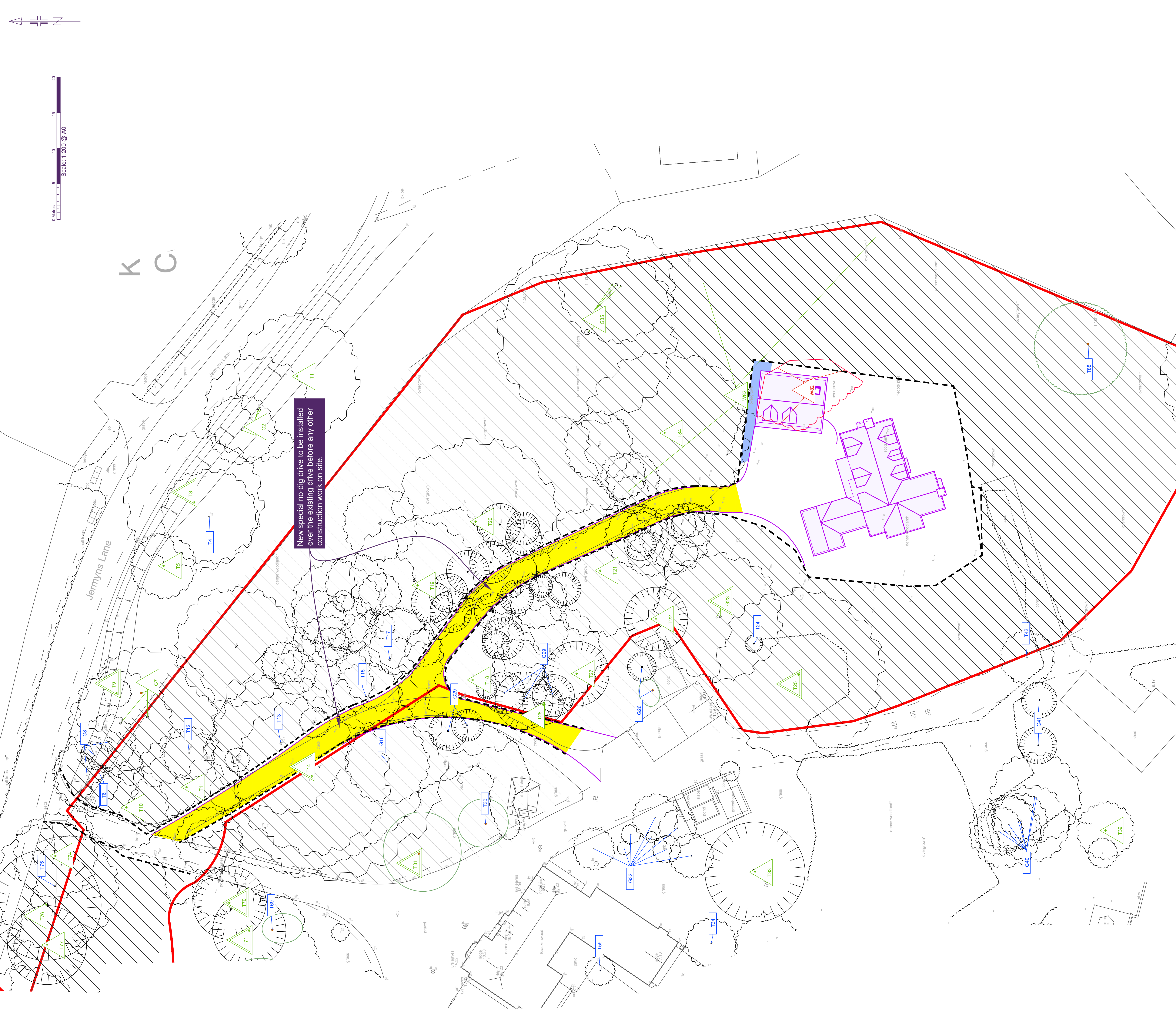
Permission is granted to access from this drawing for the purpose of providing a copy to the client for their use only. This drawing is the copyright of Barrell Tree Consultancy 2018. ©

**barrell**  
THE CONSULTANCY  
www.barrelltreecare.co.uk

- BS category A Trees of high quality
- BS category B Trees of moderate quality
- BS category C Trees of low quality
- BS category U Trees unsuitable for retention
- Trees to be removed
- Proposed layout
- Estimated tree positions not included on original land survey and/or adjusted crown spreads
- Protective barrier/fencing
- Construction exclusion zone (CEZ)
- Precursatory Areas
- Construction exclusion zone protected by ground protection

**Tree schedule**

Tree No	Species	Category	Radius	Tree Works
All retained trees & heights to be retained				
T1	Beech	B	7.2	-
G2	Sweet chestnut	B	6.0	-
T3	Beech	A	6.6	-
T4	Beech	C	4.2	-
T5	Beech	B	7.8	-
T6	Beech	U	7.2	-
G7	Holly, beech	C	3.6	-
T9	Beech	A	8.4	-
T10	Oak	B	7.2	-
T11	Beech	B	6.6	-
T12	Birch	C	3.0	-
T13	Oak	C	8.4	-
T14	Oak	A	14.4	-
T15	Beech	C	4.2	-
G16	Birch, sorbus	U	4.8	-
T17	Oak	C	6.6	-
T18	Oak	B	12.0	-
T19	Oak	B	9.0	-
T20	Oak	B	13.2	-
T21	Oak	B	8.4	-
T22	Norway spruce	B	7.2	-
G23	Oak	A	9.6	-
T24	Lawnson cypress	C	2.4	-
T25	Oak	A	14.4	-
G26	Cypress	C	3.6	-
T27	Oak	B	9.6	-
T28	Larch	B	6.0	-
G29	Norway spruce	C	3.0	-
T30	Scots pine	C	7.8	-
T31	Scots pine	A	9.6	-
Walnut, fruit, Norway maple, Indian beech, hawthorn, laburnum				
G32	Norway spruce	C	1.8	-
T33	Norway spruce	B	8.4	-
T34	Indian beech	C	3.0	-
T39	Oak	B	2.4	-
G40	Birch, sorbus	C	5.4	-
G41	Norway spruce	C	3.0	-
T42	Cherry	C	3.0	-
T69	Maple	C	2.4	-
T69	Birch	C	3.0	-
T70	Scots pine	A	8.1	-
T71	Scots pine	A	9.0	-
T74	Beech	B	4.2	-
T75	Beech	C	4.8	-
T76	Scots pine	B	10.2	-
T77	Scots pine	B	9.0	-
W62	Birch, oak, willow	B	3.6	Fell (part)
T84	Oak	B	13.2	-
G85	Beech	B	15.0	-
T88	Norway spruce	C	4.2	-



**SGN 2 Fencing protected trees**

**Always:**

- start protection before development
- make sure protection is fit for purpose
- keep protection in place until there is no risk to tree: permission to move or remove any protection

**SGN 3 Ground protection**

**Always:**

- install protection before development starts
- make sure protection is fit for purpose
- keep protection in place until there is no risk to tree: permission to move or remove any protection

**SGN 9 Installing/upgrading surfacing in RPAs**

**Always:**

- use the tree consultant to supervise work in RPAs
- minimise damage to roots and minimise excavation when installing or upgrading surfacing in RPAs

**How to use plan**

More detailed evidence on each Site Guidance Note (SGN) can be found in a printed hard copy compilation of all the SGNs, issued to the Site Manager at the pre-commencement site meeting. (Note: This should be retained on site throughout the duration of works). Additionally, an electronic version of the SGNs can be downloaded from the client's account on the website. Alternatively, a pdf of each SGN can be downloaded by:

- clicking the image links in the electronic pdf version of this plan;
- holding a mobile phone QR (Quick Response) code reader over the QR code in the paper version of this plan;
- visiting our website at <https://www.barrelltreecare.co.uk/resources/technical-guidance>